

2022 WELCOME WORKSHOP

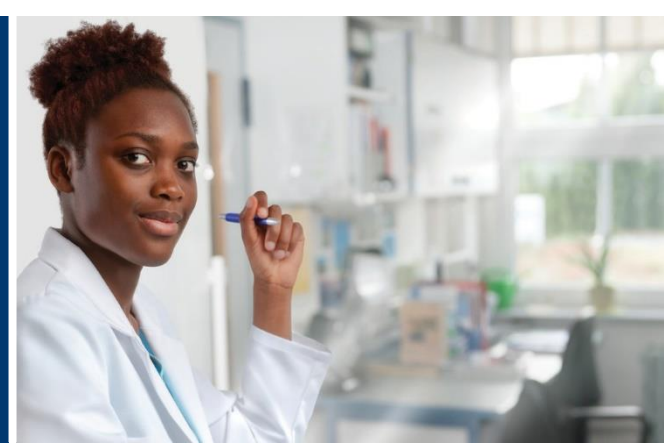


REACH

Recognizing and Eliminating disparities in Addiction
through Culturally informed Healthcare



ORGANIZED BY: Dr. Ayana Jordan, Dr. Jeanette Tetrault, Kathryn Cates-Wessel, CEO/ REACH PI
<https://reachgrant.org/>



Important Conference Details

July 14th REGISTRATION

4:00 PM – 5:30 PM

Homewood Suites by Hilton Downtown Washington, D.C.

1475 Massachusetts Avenue NW Washington, D.C. 2005 (202) 265-5810

When you arrive, please come to the registration table at the Scott Conference Room to collect your ID badge and conference materials.

July 14th MEET and GREET

6:00 pm – 8:00 pm

Howard University Louis Stokes Health Science Library

501 W. St. NW Washington, D.C. 20059

When you arrive, please proceed to the 4th floor open hallway area. There will be a cohort bonding activity instructed by REACH Leadership. Light hors d'oeuvres will be served.



Welcome to the 4th Annual REACH Welcome Workshop

JULY 14-17, 2022 • WASHINGTON, D.C.

Welcome to the 4th Annual REACH Welcome Workshop. Our goal is to provide our Scholars with an inspiring program that will increase their knowledge and skills about evidence-based, culturally informed addiction treatment for racial and ethnic minoritized patients with substance use disorders (SUD).

REACH Program Lectures range from Social Determinants of SUDs, Structural Competency, Psychedelic assisted treatments for SUDs, Advocacy 101, and Community Engagement. During this workshop are planned are hands-on interactive workshops, and group exercises aimed at both personal and professional development.

The REACH Program is made possible by funding to the Academy of Addiction Psychiatry (AAP) from the Substance Abuse and Mental Health Services Administration (SAMHSA) grant no. 5H79TI081358-04. The views expressed in written conference materials or publications and by speakers and moderators do not necessarily reflect the official policies of the Department of Health and Human Services; nor does mention of trade names, commercial practices, or organizations imply endorsement by the U.S. government.



REACH TEAM

Brief Bios about Mentors and Advisory Board Members can be found on the REACH website, under REACH Team: <https://reachgrant.org/team/>

MENTORS

Alyssa F. Peterkin, MD
J. Deanna Wilson, MD, MPH
Theddeus Iheanacho, MD
LaTrice Montgomery, PhD
Kenneth Morford, MD
Brady Heward, MD
Nicky Jayna Mehtani, MD, MPH
Srinivas Muvvala, MD, MPH
Ellen Edens, MD, MA, MPE, BA
Myra Mathis-Uwanogho, MD
Lamia Haque, MD, MPH
Alexander Y. Walley, MD, MSC
Melissa B. Weimer, DO, MCR
Tamika Barkley Zapolski, PhD
Caridad C. Ponce Martinez, MD
Holly Hagel, PhD
Saaed Ahmed, MD
Ricardo Cruz, MD
Trent Hall, MD
David A. Fiellin, MD

ADVISORY BOARD MEMBERS

The Advisory Board consists of a diverse panel of experts (experts from various disciplines and community members), with collective international and national experience in both addiction education and reducing behavioral health disparities among racial and ethnic minority populations. Through these partnerships, the REACH program creates a support network specifically designed to increase capacity of culturally-informed physicians, while also increasing the recruitment of trainees from racial/ ethnic minoritized backgrounds, who are able to meet the unique needs of patients with SUD.

Adina E. Bowe, MD
Paula Lum, MD, MPH
Rosalind DeLisser, MS, FNP, PMHNP
Sylvia Kang, MSN, PMHNP
Michelle Durham, MD, MPH
Olatunde Bosu, MD
Lachresha Hall, MD, FAPA, ABAM
Ximena Levander, MD

DAY 1 | Thursday July 14

4:00 P.M. Registration and Check-in
Homewood Suites by Hilton Downtown D.C.



Washington, DC, the U.S. capital, is a compact city on the Potomac River, bordering the states of Maryland and Virginia. It's defined by imposing neoclassical monuments and buildings.

African Americans have been a significant part of Washington, DC's civic life and identity since the city was first declared the new national capital in 1791. African Americans were 25 percent of the population in 1800. By 1900, Washington had the largest percentage of African Americans of any city in the nation. Many came because of opportunities for federal jobs. Others were attracted to the myriad educational institutions. Howard University, a magnet for professors and students and would become the "capstone of Negro education" by 1930. The Preparatory School for Colored Youth, the city's first public high school, attracted college-bound students and teachers, many with advanced degrees. (Renowned as M Street High School, and later, Dunbar High School.) As far back as 1814, churches had operated and supported schools and housed literary and historical societies that promoted critical thinking, reading, lecturing, and social justice. African Americans also created hundreds of black-owned businesses and numerous business districts.

In 1957, the District of Columbia became the first majority Black major city in the United States. The population in Washington, D.C. consists of 45% Black or African American; 41% White; 4% Other; 4% Two or more races; 4% Asian; .35 % Native American; and .05% Native Hawaiian or Pacific Islander. Washington D.C. is the home of 12 diverse colleges / universities with students who are of racial/ ethnic minorities.

In Washington, D.C. you can experience a wealth of African American History, heritage and culture including the Fredrick Douglas National Historic Site, Martin Luther King, Jr. Memorial, Smithsonian National Museum of African American History and Culture, and popular music and entertainment venues.

DAY 2 | Friday, July 15

Day 2 events will be held at Homewood Suites

7:00 A.M. Breakfast

On your own

8:00 A.M. Registration Continues

For people who could not check in the day before.
Scott Conference Room

8:30 A.M. Arrival/ Social Network

9:00 A.M. Welcome and Introduction

Speakers: Ayana Jordan, MD, PhD & Jeanette Tetrault, MD, FACP, FASAM

9:15 A.M. Healing and Liberation Consultation

Speakers: Enroue Halfkenny, LCSW (*Virtual Presentation*)

10:15 A.M. 2022-2023 Mentor Mentee Reveal

Speakers: Ayana Jordan, MD, PhD & Jeanette Tetrault, MD, FACP, FASAM

10:45 A.M. Engage Communities and Translate Research into Action

Speaker: Amanda Latimore, PhD

11:45 A.M. Break/ Social Network

12:00 P.M. Lunch

Thomas Conference Room

1:00 P.M. Social Determinants of SUDs

Speaker: Ruth Shim, MD, MPH (*Virtual Presentation*)

2:00 P.M. Break/ Social Network

2:15 P.M. Film Screening for Scholars

Addiction: Discover how opioid addiction affects the brain and how evidence-based treatments are saving lives. Film by Joe Morton

<https://www.pbs.org/wgbh/nova/video/addiction/>

2:15 P.M. Mentor Meeting with Enroue Halfkenny Zoom Breakout Room (*Virtual Meeting*)

3:30 P.M. Break/ Social Network

3:45 P.M. Cohort Bonding Activity

Speakers: Ayana Jordan, MD, PhD & Jeanette Tetrault, MD, FACP, FASAM

4:30 P.M. Daily Evaluation

Lead by: Andreka Driver, REACH Program Manager

DAY 3 | Saturday, July 16

Day 3 events will be held at Homewood Suite
Scott Conference Room and Board Room A.

7:00 A.M. Breakfast

On your own

8:30 A.M. Arrival/ Social Network

Scott Conference Room

9:00 A.M. Beyond Magic Bullets: Opioids, Race and Structural Competency

Speaker: Helena Hansen, MD, PhD
(*Virtual Presentation*)

10:15 A.M. Mentor Mentee Experience/ Best Practices

Speakers: Ayana Jordan, MD, PhD & Jeanette Tetrault, MD, FACP, FASAM

Breakout Sessions:

Fellow/ Mentor 1:1 Breakout room (virtual meeting)

Trainee/ Mentor 1:1 Breakout room (virtual meeting)

10:45 A.M. Break/ Scholar Network

11:00 A.M. Psychedelic-assisted Treatment for SUDs: Current State and Future Directions

Speaker: Albert Garcia-Romeu, PhD

12:00 P.M. Lunch

Thomas Conference Room

1:00 P.M. Commonly Used Substances and Comorbidities in Racial/ Ethnic Minoritized Communities

Speaker: Jeanette Tetrault, MD, FACP, FASAM

2:00 P.M. Break/ Scholar Network

2:15 P.M. Group Exercise- "Shark Tank"

Speakers: Ayana Jordan, MD, PhD & Jeanette Tetrault, MD, FACP, FASAM

4:00 P.M. Processing and Open Discussion

Speakers: Ayana Jordan, MD, PhD & Jeanette Tetrault, MD, FACP, FASAM

4:30 P.M. Closing Remarks

Speakers: Ayana Jordan, MD, PhD & Jeanette Tetrault, MD, FACP, FASAM

4:45 P.M. Daily Evaluation

Lead by: Andreka Driver, REACH Program Manager

REACH Leadership



Ayana Jordan, MD, PhD, is an Addiction Psychiatrist and the Barbara Wilson Associate Professor of Psychiatry in the Department of Psychiatry at NYU Grossman School of Medicine and Pillar Lead for

the Community Engagement in the NYU Langone Institute for Excellence in Health Equity. She is dedicated to creating spaces and opportunities for people of color, specifically Black women in academia who are vastly historically excluded. The fundamental message of equity and inclusion has informed her research, clinical work, and leadership duties at NYU and beyond. Dr. Jordan was the first Black Associate Program Director for the Yale Psychiatry Residency, her immediate past academic home, responsible for supervising a large group of 64 physicians providing mental health and addiction services throughout Yale medical systems in the state of Connecticut.

She recently became Director of Equity, Diversity and Inclusion for the Justice Community Opioid Innovation Network within the National Institute of Drug (Ab)use, where she'll be working to improve health outcomes for people with opioid use disorder in the carceral system. Dr. Jordan also serves as the Medical Director of Recognizing and Eliminating disparities in Addiction through Culturally informed Healthcare (REACH) Program, a Substance (Ab)use and Mental Health Services Administration grant, in conjunction with the American Academy of Addiction Psychiatry geared at increasing the number of addiction specialists from racial and ethnic minoritized populations who obtain training to provide culturally-informed addiction treatment. Passionate about helping racial and ethnic minoritized people achieve wellness and recovery from substance use disorders, Dr. Jordan was fully drawn to community-based research. Dr. Jordan is an NIH-funded researcher where she studies long term outcomes for providing addiction treatment in faith settings.



Dr. Tetraault is a Professor of Medicine and Public Health, Vice-Chief for Education for the Section of General Internal Medicine, Associate Director for the Program in Addiction Medicine, and Fellowship Director for Addiction Medicine at Yale School of

Medicine. Her scholarly work focuses on care of patients with addiction and the medical conditions associated with substance use, mainly HIV and Hepatitis C. Dr. Tetraault is the co-director of the Addiction Recovery Clinic at the New Haven Primary Care Consortium and a staff physician at the Central Medical Unit which is an integrated addiction and primary care clinic at the APT Foundation. She has been recognized for her teaching accomplishments being awarded the New England Regional Society of General Internal Medicine (SGIM) Clinician Educator of the Year Award in 2013, The W. Anderson Spickard Award for Excellence in Mentorship by the Association of Multidisciplinary Education and Research in Substance use and Addiction (AMSERSA) in 2018, and the American Society of Addiction Medicine Training Directors Award in 2021. She serves as president-elect of the American College of Academic Addiction Medicine and is a past-president of the New England Region of SGIM. In 2017, she was recognized as a Macy Foundation Faculty Scholar.



Ms. Cates-Wessel has more than 30 years of background and experience in the substance use disorder field in administration, medical education, and policy. She is Chief Executive Officer of the American Academy of Addiction Psychiatry (AAAP) and

Principal Investigator and Project Director of several federally funded grants including, Providers Clinical Support System (PCSS), www.pcssNOW.org; Opioid Response Network (ORN), www.opioidresponsenetwork.com; the Minority Fellowship grant "Recognizing and Eliminating Disparities in Addiction Through Culturally Informed Healthcare" (REACH), <https://reachgrant.org>; and Expansion of Interprofessional Education (SUD-Training), <https://sud-training.org>. Prior to her work at AAAP, she was Associate Director of Brown University's Center for Alcohol and Addiction Studies for over 19 years and Executive Director of Physicians and Lawyers for National Drug Policy, a think tank of leaders from law and medicine advocating for prevention/treatment of individuals with substance use and opioid use disorders over incarceration. Prior to Brown University, she was the Associate Director of a residential treatment center for adolescents with substance use disorders and co-occurring mental disorders.

REACH WELCOME WOKSHOP GUEST SPEAKERS



Enroue Onigbonna Halfkenny, has been an Ifa priest within the West African Yoruba Orisa religion for over 20 years and a Clinical Social Worker for 14 years. He is also a consultant, advisor, writer, artist, and an activist. Born in Boston, Massachusetts in 1968, Enroue is a multiracial, black, cis-gendered, heterosexual man, a father of two, has been married for over 20 years, and has been sober for more than 30 years. His practice, Healing and Liberation Counseling, weaves together spiritual, mental health and social justice issues to guide individuals, communities, and organizations to develop practices towards liberation.



Amanda Latimore is a social epidemiologist and the Director of AIR's Center for Addiction Research and Effective Solutions (AIR CARES). AIR CARES's multidisciplinary team conducts research, delivers education and technical assistance, engages communities, and translates research into action with the goal of preventing addiction and addressing the needs of those impacted by addiction. Dr. Latimore emphasizes in her approach to this work the role of social, economic, and political context in facilitating or impeding health.

Dr. Latimore draws on her experience as faculty, researcher, and public health practitioner at the Johns Hopkins Bloomberg School of Public Health where she was Public Sector Initiatives Lead for the Bloomberg American Health Initiative. There she worked directly with state public officials to provide technical assistance on the overdose crisis, strategies that spanned prevention, treatment, harm reduction, and recovery. Within the university walls, she cultivated opportunities for research translation through academic-public sector partnerships.

Prior to joining AIR, Dr. Latimore also held leadership roles with Baltimore City's health department and Baltimore City's behavioral health authority. There she led data projects to inform decision-making and advocacy. Her expertise on municipal-level evaluations, performance-based initiatives, data linkages and dashboards, stakeholder engagement, capacity

assessments, rapid response to syndromic surveillance of overdose provides a practical backdrop for supporting public agencies, empowering communities, and leveraging data to make an impact on health at the local level.

As part of a community-based participatory research project, Dr. Latimore collaborated with a local youth empowerment center to understand how addressing trauma and streamlining mental health services into employment training programs impact economic and educational outcomes of disconnected youth. Dr. Latimore also amplified the voice of people who use drugs through projects which detailed their experiences, perceptions, and needs during emergency medical staff and police encounters during overdose events.

While conducting community-based, city, state, and national research, Dr. Latimore utilized a variety methodological approach while staying grounded by the needs of service providers and the needs of those they serve. This includes conducting multilevel modeling to investigate the factors that predict family engagement and service tailoring across home visiting models. Other expertise include propensity score analyses, geospatial analyses, and qualitative and mixed methods.

Dr. Latimore is an adjunct assistant professor in the Department of Epidemiology at the Johns Hopkins Bloomberg School of Public Health where she continues to teach social epidemiology.



Ruth Shim, M.D., M.P.H., is the Luke & Grace Kim Professor in Cultural Psychiatry and Professor of Clinical Psychiatry in the Department of Psychiatry and Behavioral Sciences at the University of California, Davis. She also serves as Associate Dean of Diverse and Inclusive Education at the University of California, Davis School of Medicine. Dr. Shim's research focuses on mental health disparities and inequities, and she provides clinical psychiatric care in the UC Davis Early Diagnosis and Preventative Treatment (EDAPT) Clinic.

Dr. Shim is a member of the Board of Trustees of the Robert Wood Johnson Foundation and the American Association for Community Psychiatry. She serves on the Research and Evaluation Committee of the California Mental Health Services Oversight and Accountability Commission. Additionally, Dr. Shim serves on the editorial boards of JAMA Psychiatry, Psychiatric Services, Community Mental Health Journal, and American Psychiatric Publishing. She is co-editor of the books, The Social Determinants of Mental Health, and the recently

published, *Social (In)Justice and Mental Health*.

Dr. Shim is a former fellow of the Executive Leadership in Academic Medicine (ELAM) Program, and an at-large member of the National Academies of Sciences, Engineering, and Medicine Forum on Mental Health and Substance Use Disorders.

Dr. Shim received a Master of Public Health specializing in health policy from the Rollins School of Public Health at Emory University and an M.D. from Emory University School of Medicine.



Helena Hansen earned an MD and a PhD in cultural anthropology as part of Yale University's NIH funded Medical Scientist Training Program. During graduate school she completed fieldwork in Havana on Cuban AIDS policy, and in

Puerto Rico on faith healing in evangelical Christian addiction ministries founded and run by self-identified ex-addicts.

After graduate school, she completed a clinical residency in psychiatry at NYU Medical Center/Bellevue Hospital, during which she also undertook an ethnographic study of the introduction of new addiction pharmaceuticals. She examined the social and political implications of clinicians' efforts to establish addiction as a biomedical, rather than moral or social condition, as well as the ways that neurochemical treatments may be re-inscribing hierarchies of ethnicity and race. She completed a feature length visual documentary based on this work, *Managing the Fix*, which debuted at the annual meeting of the American Psychiatric Association. Her book *Addicted to Christ: Remaking Men in Puerto Rican Pentecostal Drug Ministries* was published by UC Press in 2018.

She is also leading a national movement for training of clinical practitioners to address social determinants of health, which she and Jonathan Metzl call "Structural Competency," and which is the subject of her second book, *Structural Competency in Medicine, and Mental Health: A Case-Based Approach to Treating the Social Determinants of Health*, with co-editor Jonathan Metzl, published by Springer Press in 2019. Her third book, *Whiteout: How Racial Capitalism Changed the Color of*

Heroin in America, with policy analyst Jules Netherland and historian David Herzberg, is forthcoming from UC Press.

She is the recipient of the Robert Wood Johnson Health Policy Investigator Award, Kaiser Permanente Burche Minority Leadership Award, an NIH K01 Award, a Mellon Sawyer Seminar grant, the NYU Golden Dozen Teaching Award, the American Association of Directors of Psychiatry Residency Training Model Curriculum Award, and an honorary doctorate from Mount Sinai School of Medicine in New York.



Albert Garcia-Romeu, Ph.D. is an Assistant Professor of Psychiatry and Behavioral Sciences at the Johns Hopkins University School of Medicine. His research examines the effects of psychedelics in humans, with a focus on psilocybin as an aid in the treatment of addiction. His current research interests include clinical applications of psychedelics, real-world drug use patterns, diversity in science, and the role of spirituality in mental health. He is a founding member of the Johns Hopkins Center for Psychedelic and Consciousness Research and the International Society for Research on Psychedelics.



REACH COHORTS



COHORT 1 2019-2020



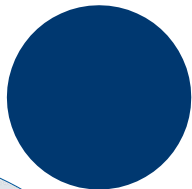
COHORT 3 2021-2022



COHORT 2 2020-2021



COHORT 4 2022-2023





Funding for this initiative was made possible (in part) by grant no. 5H79TI081358-04 from SAMHSA. The views expressed in written conference materials or publications and by speakers and moderators do not necessarily reflect the official policies of the Department of Health and Human Services; nor does mention of trade names, commercial practices, organizations imply endorsement by the U.S. government

